

I-8 MONUMENT ASSEMBLY				
ITEM No.	STATION	RESET EACH	TYPE EACH	
I-M	117+04.19	1		
I-M	129+00	1		
TOTAL VILL. OF BRATENAUH		1	1	

SEE THE 1975 CUY-90-21.27  
PLANS FOR THE MEDIAN  
CONCRETE BARRIER INSTALL

L-10 SQ. YDS. (SHEET No 25)					
ITEM No.	STATION	FROM TO	SIDE	LENGTH x WIDTH	SODDING FOR SPECIAL BERM & SLOPE PROTECTION
1-B	122+23	124+13	L	16'x15'	53.
2-B	126+43	128+33	L	16'x15'	53.
3-B	128+53	129+00	L	16'x15'	13.
4-B	120+03	124+93	R	16'x15'	53.
5-B	122+23	124+13	R	16'x15'	53.
6-B	124+43	126+33	R	16'x15'	53.
7-B	127+00	128+25	R	16'x15'	33.
SUB-TOTAL VILLAGE OF BRATENAUH					311.
7-B	128+25	129+00	R	16'x15'	20.
SUB-TOTAL CITY OF CLEVELAND					20.
TOTAL SHEET No 25					331.

L-10 SQ. YDS. (SHEET No 26)					
ITEM No.	STATION	FROM TO	SIDE	LENGTH x WIDTH	SODDING FOR SPECIAL BERM & SLOPE PROTECTION
1-B	129+00	130+33	L	16'x15'	37.
2-B	132+28	134+18	L	16'x15'	53.
3-B	130+43	132+33	R	16'x15'	37.
4-B	132+53	134+33	R	16'x15'	22.
0-B	STRUCTURE @ 139+50 N.E. ABUT.			VARIES	60.
11-B	STRUCTURE @ 139+50 N.E. ABUT.			VARIES	44.
SUB-TOTAL VILLAGE OF BRATENAUH					149.
3-B	139+43	132+33	R	16'x15'	16.
4-B	132+53	134+33	R	16'x15'	29.
5-B	134+67	136+57	R	16'x15'	53.
6-B	138+10	139+75	R	16'x15'	53.
7-B	141+45	142+00	L	16'x15'	32.
8-B	141+45	142+00	L	16'x15'	13.
9-B	139+82	141+82	R	200'x12'	267.
11-B	STRUCTURE @ 139+50 N.E. ABUT.			VARIES	101.
12-B	STRUCTURE @ 139+50 SW. ABUT.			VARIES	18.
13-B	STRUCTURE @ 139+50 SE. ABUT.			VARIES	60.
14-B	125+15	132+75	R	12'	472.
SUB-TOTAL CITY OF CLEVELAND					935.
TOTAL SHEET No 26					1084.
TOTAL VILLAGE OF BRATENAUH					460.
TOTAL CITY OF CLEVELAND					955.
TOTAL SHT. 25 & SHT. 26					1415.

SEE THE 1946 CUY-2-23.68  
FOR ORIGINAL CONSTRUCTION

STORM SEWER																			
ITEM Nº	STATION		SIDE RT. OR LT.	1-2 LIN. FT.						UNDER PAVT.	1-8' EACH					1-16' EACH			LOCATION OF STRUCTURE
				12" CL A	12" CL B	21" CL B	27" CL B	30" CL B	30" CL B		15" CL B	M.H. EXIST. ADJ. TO GRADE	STD. MH. *1	MOD. C.I. *2.6	MOD. C.B. *5	ABANDONED			
	MH.	C.I.														C.B.			
M-6.6 (b) or M-6.8 (b)																			
1-5	117+6.2	117+7.0	L 4 1/2															117+6.2; +7.0	
2-5	119+8.2	119+9.0	L	5														119+8.2; +9.0	
3-5	122+0.2	122+1.0	L 8 R	5														122+0.2; +1.0	
4-5	124+2.2	124+3.0	L 8 R	18	5													124+2.2; +3.0	
5-5	126+4.2	126+5.0	L 8 R	5														126+4.2; +5.0	
6-5	128+4.2	128+5.0	L 8 R	18	5													128+4.2; +5.0	
7-5	119+9.0	122+1.0	R		35	184			76									120+2.0	
8-5	122+1.0	124+3.0	R	17		208												122+1.0; 122+9.6	
9-5	124+3.0	127+0.0	R	17			260											124+3.0	
10-5	126+5.0	129+0.0	R	53				80	110°									126+5.0; 127+0.0	
TOTALS				123	65	392	260	80	110°	76	6*	4	6	5		1	4	7	



**- SEE THE 1948 CUY-90-21.30  
FOR ORIGINAL CONSTRUCTION**

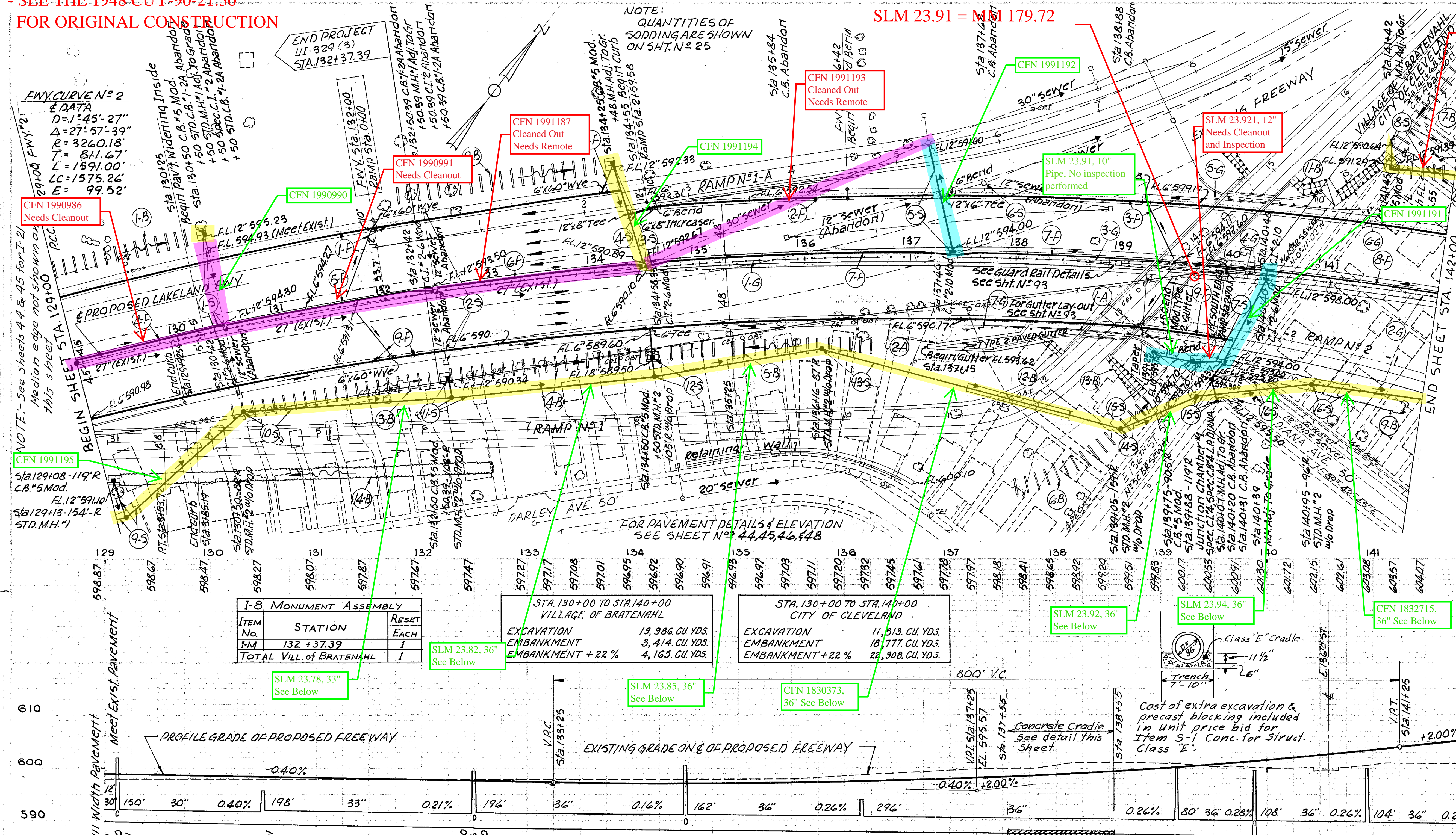
**LAKESHORE BLVD**  
**SLM 23.91 = MM 179.72**

ED. RD. DIVISION	STATE	PROJECT	FISCAL YEAR
2	OHIO	1-329 (12)	1958

26

149

CUYAHOGA COUNTY  
CUI - 2 - 22.97

[illegible]

SEE THE 1975 CUY-90-21.27  
PLANS FOR THE MEDIAN  
CONCRETE BARRIER INSTALL

I-14 LIN. FT. PAVED GUTTER						I-10 Sq.Yds
ITEM No.	STATION		SIDE	STD.	MOD.	SODDING
	FROM	TO		TYPE 2	TYPE 2	
1-A	138+02	139+50	R		150	18
2-A	137+15	138+02	R	176		40
TOTAL - CITY OF CLEVELAND				176	150	58

6" UNDERDRAINS										
ITEM N <sup>2</sup>	STATION		SIDE ROW L	T-4 LIN. FT.				T-5 EACH		
				6" UNDER DRAIN SHALLOW	6" U.D DEEP	8" PIPE OUTLET	6" 60° WYE	6" 11° BEND	6" x 6" TEE	
	FROM	TO								
1-F	129+00	134+53	L	20		630	10		2	
2-F	134+65	137+25	L			270			1	
3-F	137+27	142+00	L	100	138°	312			1	1
4-F	129+00	130+41	L	131			10			
5-F	130+44	132+41	L	187			10			
6-F	132+44	134+43	L			192	10			
7-F	134+50	140+33	L	14	24°	540	10			
8-F	140+41	142+00	L		149°		10°			
9-F	129+00	140+12	R			789	2		1	1
						445°	8°		1°	
TOTALS	CLEVELAND <sup>c</sup>	BRATENAHL		452	311°	445°	178°		1°	4
						2739	52		4	2

- SEE THE 1975 CUY-90-21.27 FOR SEWER AND DRAINAGE STRUCTURE UPGRADE.

PLAN & PROFILE ... MAIN LINE STA. 129+00 TO STA. 142+00



E. 140th STREET  
SLM 24.10 = MM 179.91

FED. RD. DIVISION	STATE	PROJECT	FISCAL YEAR	
2	OHIO	I-329 (12)	1958	27 149

CUYAHOGA COUNTY  
CUY - 2 - 22.97

I-8 MONUMENT ASSEMBLY				
ITEM NO.	STATION	SIDE	TYPE	EACH
1-M	144+91.00	E	1	
2-M	148+91.00	E	1	
TOTAL				2

G' UNDERDRAINS				
STATION	FROM	TO	ITEM NO.	TOTALS
1-F	142.00	143.13	L	143
2-F	143.14	144.48	L	292
3-F	144.49	145.82	L	292
4-F	145.83	147.17	L	197
5-F	147.18	148.51	L	98
6-F	148.52	149.85	L	288
7-F	149.86	151.19	L	288
8-F	151.20	152.53	L	254
9-F	152.54	153.87	R	233
10-F	153.88	155.21	R	99
TOTALS				2939

STORM SEWER				
STATION	FROM	TO	ITEM NO.	TOTALS
1-S	142+00	144+50	R	164
2-S	144+50	146+75	R	6
3-S	146+75	149+25	R	37
4-S	149+25	150+00	R	6
5-S	150+00	154+00	R	44
6-S	154+00	155+00	R	50
7-S	155+00	155+00	R	35
TOTALS				354

SLM 23.93, 12"  
Needs Inspection  
Outlet manhole  
filled with debris;  
inlet manhole  
seemingly filled  
with water and  
debris. Outlet  
inaccessible for  
cleaning.

SLM 24.00, 12"

CFN 1991183

FWY CURVEN=2  
E DATA  
D=1°45'-27"  
T=811.67  
R=3260.18  
L=1591.00  
LC=1575.26  
E=99.52

SPIRAL DATA  
Δ=3°28'-33"  
ΔC=27°57'-39"  
Ls=400.00  
Rs=3°30'-54"  
Dc=1°45'-27"  
Ts=1119.267  
Es=129.071  
P=2040

CFN 1832715,  
36" See Below

SLM 24.03, 36"  
See Below

SLM 24.08, 36"  
See Below

SLM 24.10, 36"  
See Below

SLM 24.21, 15"  
See Below

- SEE THE 1975 CUY-90-21.27  
FOR SEWER AND DRAINAGE  
STRUCTURE UPGRADE.

L-10 SQ. YDS.				
ITEM NO.	STATION	LENGTH X WIDTH	SODDING	SODDING FOR SPECIAL BERM & SLOPE PROTECTION
1-B	142+00	145+57	L 16' x 1.5'	93
2-B	146+70	148+45	L 16' x 1.5'	53
3-B	143+48		L 36' x 10'	40
4-B	146+85		R 31' x 10'	41
5-B	149+18		R 48' x 10'	53
6-B	154+00		R 53' x 10'	59
STRUCTURE OVER E. 140TH ST.				
7-B	N.W. ABUTMENT			25
8-B	N.E. ABUTMENT			48
9-B	S.W. ABUTMENT			48
10-B	S.E. ABUTMENT			48
TOTAL THIS SHEET			339	169

SEE THE 1975 CUY-90-21.27  
PLANS FOR THE MEDIAN  
CONCRETE BARRIER INSTALL

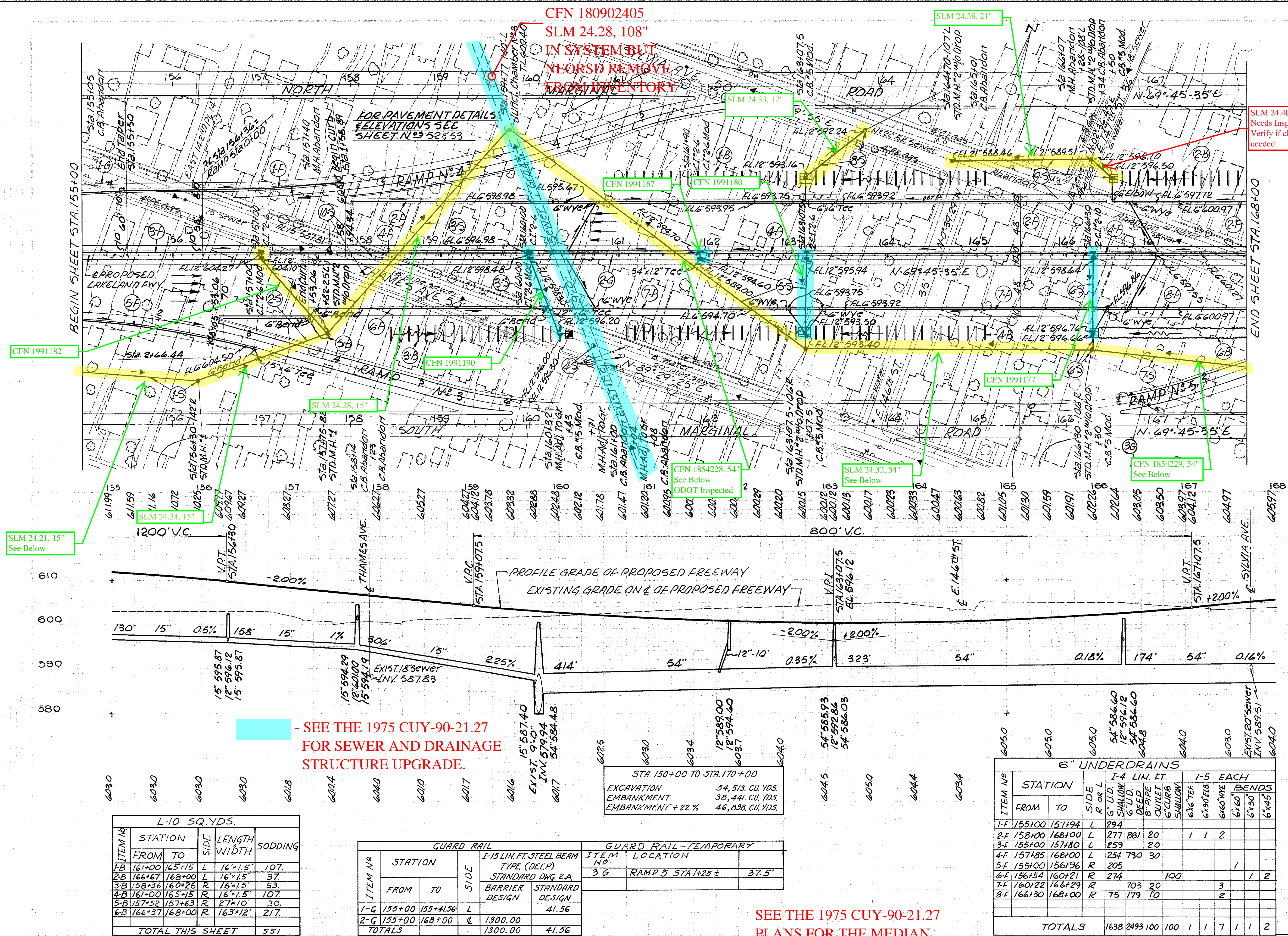
STA. 140+00 TO STA. 150+00  
EXCAVATION 3,429 CU. YDS.  
EMBANKMENT 44,537 CU. YDS.  
EMBANKMENT + 22% 54,335 CU. YDS.

GUARD RAIL				
ITEM NO.	STATION	TYPE (DEEP)	STANDARD DWG. 2A	STANDARD DESIGN
1-G	142+00	149+34.5	E	734.50
2-G	149+34.5	149+43.06	E	8.56
3-G	151+90.84	151+98.20	E	7.36
4-G	151+98.20	155+00	E	301.80
5-G	142+05.74	149+55.74	L	750.00
6-G	144+54.84	149+04.84	R	450.00
7-G	151+78.16	154+53.16	R	275.00
8-G	152+29.06	155+00	L	270.94
TOTALS				1052.22

PLAN & PROFILE --- MAIN LINE STA. 142+00 TO STA. 155+00



CUYAHOGA COUNTY  
CUY - 2 - 22.97



STORM SEWERS																																																																																																																																																																																																																																																																																																																																																																																																																																																																																																																																																																																																																																																																																																																																																																																																																																																																																																																																																																																																																																																																																																																																																																																																																																																																																																																																																																																																																																																											
STATION		ITEM NO	SIDE	I-2 LIN. FT.										I-8 EACH										I-5 EACH			I-16 EACH																																																																																																																																																																																																																																																																																																																																																																																																																																																																																																																																																																																																																																																																																																																																																																																																																																																																																																																																																																																																																																																																																																																																																																																																																																																																																																																																																																																																																																
				12" A		12" B		15" A		15" B		15" C		15" D		15" E		15" F		15" G		15" H		15" I		15" J		15" K		15" L		15" M		15" N		15" O		15" P		15" Q		15" R		15" S		15" T		15" U		15" V		15" W		15" X		15" Y		15" Z		15" AA		15" AB		15" AC		15" AD		15" AE		15" AF		15" AG		15" AH		15" AI		15" AJ		15" AK		15" AL		15" AM		15" AN		15" AO		15" AP		15" AQ		15" AR		15" AS		15" AT		15" AU		15" AV		15" AW		15" AX		15" AY		15" AZ		15" BA		15" BB		15" BC		15" BD		15" BE		15" BF		15" BG		15" BH		15" BI		15" BJ		15" BK		15" BL		15" BM		15" BN		15" BO		15" BP		15" BQ		15" BR		15" BS		15" BT		15" BU		15" BV		15" BW		15" BX		15" BY		15" BZ		15" CA		15" CB		15" CC		15" CD		15" CE		15" CF		15" CG		15" CH		15" CI		15" CJ		15" CK		15" CL		15" CM		15" CN		15" CO		15" CP		15" CQ		15" CR		15" CS		15" CT		15" CU		15" CV		15" CW		15" CX		15" CY		15" CZ		15" DA		15" DB		15" DC		15" DD		15" DE		15" DF		15" DG		15" DH		15" DI		15" DJ		15" DK		15" DL		15" DM		15" DN		15" DO		15" DP		15" DQ		15" DR		15" DS		15" DT		15" DU		15" DV		15" DW		15" DX		15" DY		15" DZ		15" EA		15" EB		15" EC		15" ED		15" EE		15" EF		15" EG		15" EH		15" EI		15" EJ		15" EK		15" EL		15" EM		15" EN		15" EO		15" EP		15" EQ		15" ER		15" ES		15" ET		15" EU		15" EV		15" EW		15" EX		15" EY		15" EZ		15" FA		15" FB		15" FC		15" FD		15" FE		15" FF		15" FG		15" FH		15" FI		15" FJ		15" FK		15" FL		15" FM		15" FN		15" FO		15" FP		15" FQ		15" FR		15" FS		15" FT		15" FU		15" FV		15" FW		15" FX		15" FY		15" FZ		15" GA		15" GB		15" GC		15" GD		15" GE		15" GF		15" GG		15" GH		15" GI		15" GJ		15" GK		15" GL		15" GM		15" GN		15" GO		15" GP		15" GQ		15" GR		15" GS		15" GT		15" GU		15" GV		15" GW		15" GX		15" GY		15" GZ		15" HA		15" HB		15" HC		15" HD		15" HE		15" HF		15" HG		15" HH		15" HI		15" HJ		15" HK		15" HL		15" HM		15" HN		15" HO		15" HP		15" HQ		15" HR		15" HS		15" HT		15" HU		15" HV		15" HW		15" HX		15" HY		15" HZ		15" IA		15" IB		15" IC		15" ID		15" IE		15" IF		15" IG		15" IH		15" II		15" IJ		15" IK		15" IL		15" IM		15" IN		15" IO		15" IP		15" IQ		15" IR		15" IS		15" IT		15" IU		15" IV		15" IW		15" IX		15" IY		15" IZ		15" JA		15" JB		15" JC		15" JD		15" JE		15" JF		15" JG		15" JH		15" JI		15" JJ		15" JK		15" JL		15" JM		15" JN		15" JO		15" JP		15" JQ		15" JR		15" JS		15" JT		15" JU		15" JV		15" JW		15" JX		15" JY		15" JZ		15" KA		15" KB		15" KC		15" KD		15" KE		15" KF		15" KG		15" KH		15" KI		15" KJ		15" KK		15" KL		15" KM		15" KN		15" KO		15" KP		15" KQ		15" KR		15" KS		15" KT		15" KU		15" KV		15" KW		15" KX		15" KY		15" KZ		15" LA		15" LB		15" LC		15" LD		15" LE		15" LF		15" LG		15" LH		15" LI		15" LJ		15" LK		15" LL		15" LM		15" LN		15" LO		15" LP		15" LQ		15" LR		15" LS		15" LT		15" LU		15" LV		15" LW		15" LX		15" LY		15" LZ		15" MA		15" MB		15" MC		15" MD		15" ME		15" MF		15" MG		15" MH		15" MI		15" MJ		15" MK		15" ML		15" MN		15" MO		15" MP		15" MQ		15" MR		15" MS		15" MT		15" MU		15" MV		15" MW		15" MX		15" MY		15" MZ		15" NA		15" NB		15" NC		15" ND		15" NE		15" NF		15" NG		15" NH		15" NI		15" NJ		15" NK		15" NL		15" NO		15" NP		15" NQ		15" NR		15" NS		15" NT		15" NU		15" NV		15" NW		15" NX		15" NY		15" NZ		15" OA		15" OB		15" OC		15" OD		15" OE		15" OF		15" OG		15" OH		15" OI		15" OJ		15" OK		15" OL		15" OM		15" ON		15" OO		15" OP		15" OQ		15" OR		15" OS		15" OT		15" OU		15" OV		15" OW		15" OX		15" OY		15" OZ		15" PA		15" PB		15" PC		15" PD		15" PE		15" PF		15" PG		15" PH		15" PI		15" PJ		15" PK		15" PL		15" PM		15" PN		15" PO		15" PP		15" PQ		15" PR		15" PS		15" PT		15" PU		15" PV		15" PW		15" PX		15" PY		15" PZ		15" QA		15" QB		15" QC		15" QD		15" QE		15" QF		15" QG		15" QH		15" QI		15" QJ		15" QK		15" QL		15" QM		15" QN		15" QO		15" QP		15" QQ		15" QR		15" QS		15" QT		15" QU		15" QV		15" QW		15" QX		15" QY		15" QZ		15" RA		15" RB		15" RC		15" RD		15" RE		15" RF		15" RG		15" RH		15" RI		15" RJ		15" RK		15" RL		15" RM		15" RN		15" RO		15" RP		15" RQ		15" RR		15" RS		15" RT		15" RU		15" RV		15" RW		15" RX		15" RY		15" RZ		15" SA		15" SB		15" SC		15" SD		15" SE		15" SF		15" SG		15" SH		15" SI		15" SJ		15" SK		15" SL		15" SM		15" SN		15" SO		15" SP		15" SQ		15" SR		15" SS		15" ST		15" SU		15" SV		15" SW		15" SX		15" SY		15" SZ		15" TA		15" TB		15" TC		15" TD		15" TE		15" TF		15" TG		15" TH		15" TI		15" TJ		15" TK		15" TL		15" TM		15" TN		15" TO		15" TP		15" TQ		15" TR		15" TS		15" TT		15" TU		15" TV		15" TW		15" TX		15" TY		15" TZ		15" UA		15" UB		15" UC		15" UD		15" UE		15" UF		15" UG		15" UH		15" UI		15" UJ		15" UK		15" UL		15" UM		15" UN		15" UO		15" UP		15" UQ		15" UR		15" US		15" UT		15" UV		15" UW		15" UX		15" UY		15" UZ		15" VA		15" VB		15" VC		15" VD		15" VE		15" VF		15" VG		15" VH		15" VI		15" VJ		15" VK		15" VL		15" VM		15" VN		15" VO		15" VP		15" VQ		15" VR		15" VS		15" VT		15" VU		15" VV		15" VW		15" VX		15" VY		15" VZ		15" WA		15" WB		15" WC		15" WD		15" WE		15" WF		15" WG		15" WH		15" WI		15" WJ		15" WK		15" WL		15" WM		15" WN		15" WO		15" WP		15" WQ		15" WR		15" WS		15" WT		15" WU		15" WV		15" WW		15" WX		15" WY		15" WZ		15" XA		15" XB		15" XC		15" XD		15" XE		15" XF		15" XG		15" XH		15" XI		15" XJ		15" XK		15" XL		15" XM		15" XN		15" XO		15" XP		15" XQ		15" XR		15" XS		15" XT		15" XU		15" XV		15" XW		15" XX		15" XY		15" XZ		15" YA		15" YB		15" YC		15" YD		15" YE		15" YF		15" YG		15" YH		15" YI		15" YJ		15" YK		15" YL		15" YM		15" YN		15" YO		15" YP		15" YQ		15" YR		15" YS		15" YT		15" YU		15" YV		15" YW		15" YX		15" YY		15" YZ		15" ZA		15" ZB		15" ZC		15" ZD		15" ZE		15" ZF		15" ZG		15" ZH		15" ZI		15" ZJ		15" ZK		15" ZL		15" ZM		15" ZN		15" ZO		15" ZP		15" ZQ		15" ZR		15" ZS		15" ZT		15" ZU		15" ZV		15" ZW		15" ZX		15" ZY		15" ZZ	
				12" A		12" B		15" A		15" B		15" C		15" D		15" E		15" F		15" G		15" H		15" I		15" J		15" K		15" L		15" M		15" N		15" O		15" P		15" Q		15" R		15" S		15" T		15" U		15" V		15" W		15" X		15" Y		15" Z		15" AA		15" AB		15" AC		15" AD		15" AE		15" AF		15" AG		15" AH		15" AI		15" AJ		15" AK		15" AL		15" AM		15" AN		15" AO		15" AP		15" AQ		15" AR		15" AS		15" AT		15" AU		15" AV		15" AW		15" AX		15" AY		15" AZ		15" BA		15" BB		15" BC		15" BD		15" BE		15" BF		15" BG		15" BH		15" BI		15" BJ		15" BK		15" BL		15" BM		15" BN		15" BO		15" BP		15" BQ		15" BR		15" BS		15" BT		15" BU		15" BV		15" BW																																																																																																																																																																																																																																																																																																																																																																																																																																																																																																																																																																																																																																																																																																																																																																																																																																																																																																																																																																																																																																																																																																																																																																																																																																																																																															

SEE THE 1975 CUY-90-21.27  
PLANS FOR THE MEDIAN  
CONCRETE BARRIER INSTALL

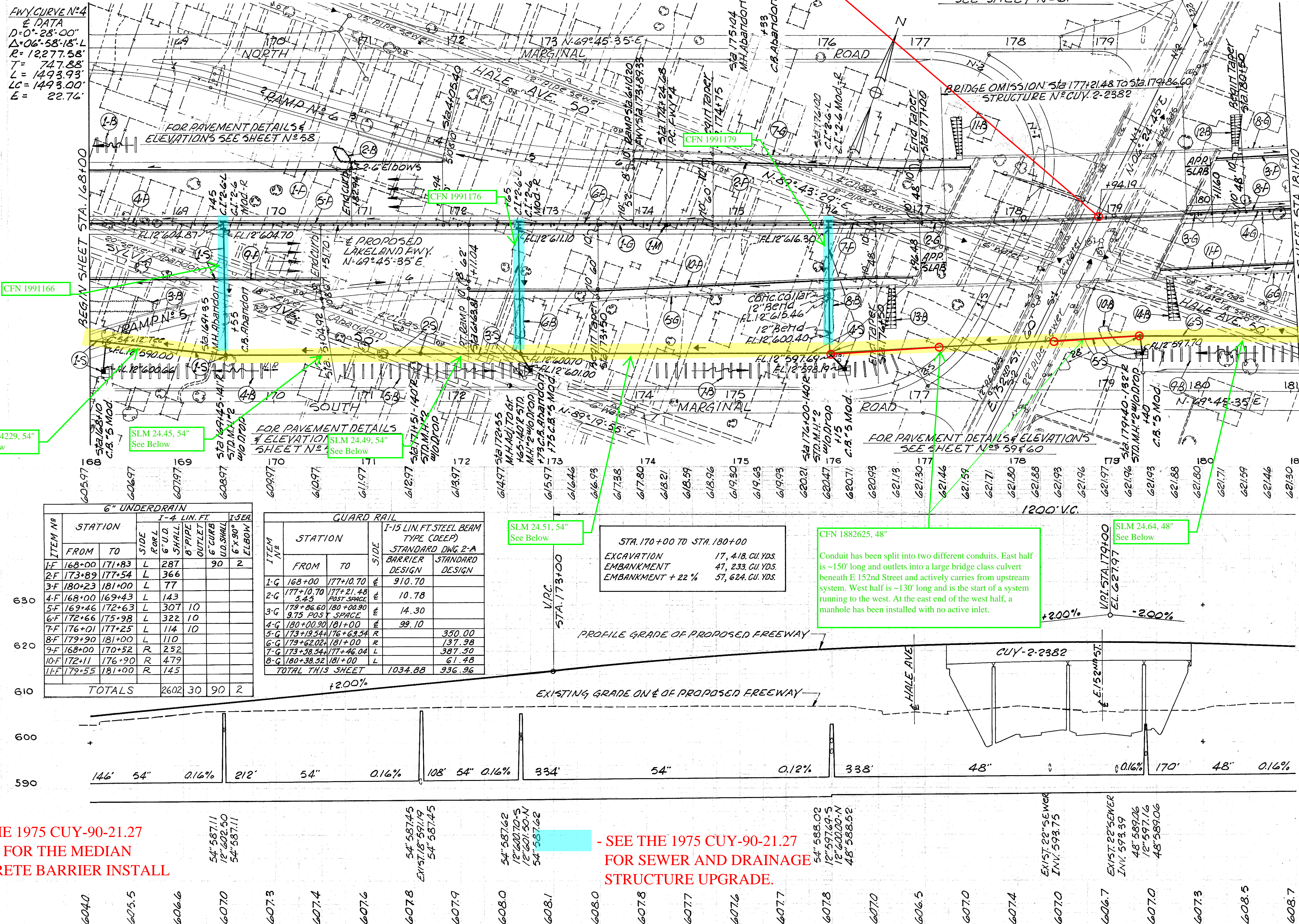


FOR PAVEMENT DETAILS & ELEVATIONS  
SEE SHEET N° 61

CUYAHOGA COUNTY  
CUY - 2 - 22.97

I-8 MONUMENT ASSEMBLY			
ITEM No.	STATION	SIDE RorL	TYPE #
			EACH
I-M	174+24.68	R	1
TOTAL			1

		L-10 SQ. YDS.				
ITEM NO.	STATION		SIDE	LENGTH * WIDTH	SODDING	SODDING FOR SPECIAL BERM & SLOPE PROTECTION
	FROM	TO				
1-B	168+00	168+57	L	16'x1.5'	16.	
2-B	170+78		L	18'x10'	20.	
3-B	168+00	168+68	R	68'x12'	91.	
4-B	168+27	169+87	R	16'x1.5'	4.5	
5-B	170+68	172+58	R	16'x1.5'	53.	
6-B	172+65		R	45'x10'	50.	
7-B	174+08	176+72	R	16'x1.5'	66.	
8-B	176+00		R	50'x10'	56.	
9-B	179+57	181+00	R	16'x1.5'	40.	
10-B	178+91	179+33	R	51'x12'	68.	
STRUCTURE OVER E. 1/2 <sup>ND</sup> ST.						
11-B	N.W. ABUTMENT			VARIES		48.
12-B	N.E. ABUTMENT			VARIES		47.
13-B	S.W. ABUTMENT			VARIES		48.
14-B	S.E. ABUTMENT			VARIES		48
TOTAL THIS SHEET					505	191

[illegible]

SEE THE 1975 CUY-90-21.27  
PLANS FOR THE MEDIAN  
CONCRETE BARRIER INSTALL

- SEE THE 1975 CUY-90-21.27  
FOR SEWER AND DRAINAGE  
STRUCTURE UPGRADE.

PLAN & PROFILE ... MAIN LINE STA. 168+00 TO STA. 181+00



FWY CURVE N° 4  
E DATA  
D=00° 28' 00"  
Δ=06° 58' 18"  
R=12277.58'  
T= 747.88'  
L= 1493.93'  
LC= 1493.00'  
E= 22.76'

Begin Work  
Sta. 2+87.20  
DANIEL AVE.

FOR PAVEMENT DETAILS &  
ELEVATIONS SEE SHEET N° 49

Begin Work  
Sta. 4+77.99  
CALCUTTA AVE.

FOR PAVEMENT DETAILS & ELEVATIONS  
SEE SHEET N° 22265

Begin Work  
Sta. 3+72.36  
E. 156TH ST.

SLM 24.89, 12"  
Needs Inspection,  
Two different  
conduits with  
manhole between.  
West pipe too  
short for  
inspection; east  
pipe requires  
cleanout and  
remote.

SLM 24.85, 12"  
Needs Inspection, Inlet catch basin full of  
water and debris; needs cleanout. Outlet  
manhole paved over; therefore, will need  
remote from inlet.

SLM 24.64, 48"  
See Below

SLM 24.70, 48"  
See Below

SLM 24.79, 48"  
See Below

SLM 24.84, 42"  
See Below

SLM 24.88, 42"  
See Below

CFN 1882626, 48"  
See Below

L-10 SQ. YDS.				
ITEM No.	STATION		SIDE x WIDTH	SODDING
	FROM	TO		
1-B	181+54	194+00	L 16' x 1.5'	131.
2-B	181+00	194+00	R 16' x 1.5'	131.
3-B	188+84	192+02	R 295' x 12'	393.
4-B	182+50		R 51' x 10'	57.
TOTAL THIS SHEET				712.

GUARD RAIL - TEMPORARY		
ITEM NO.	LOCATION	
4 G	RAMP B. STA. 4+74±	37.5'
5 G	RAMP G. STA. 0+25±	72.5'
TOTAL		50.0

GUARD RAIL				
ITEM No.	STATION		SIDE	I-15 LIN. FT. STEEL BEAM TYPE (DEEP) STANDARD DWG. 2-A BARRIER STANDARD DESIGN DESIGN
	FROM	TO		
1-G	181+00	194+00	E	1300.00
2-G	181+00	183+99.52±	R	299.52
3-G	181+00	185+51.02±	L	451.02
TOTALS				1300.00 750.54

I-8 MONUMENT ASSEMBLY				
ITEM No.	STATION	SIDE	RoP L	TYPE
1-M	189+18.61	E		1
TOTAL				1

6" UNDERDRAINS									
ITEM No.	STATION		SIDE	RoP L	I-4 LIN. FT.			I-5 EACH	
	FROM	TO			6" LID SHALLOW	6" LID DEEP	6" CURB UNDER SHALLOW	6" x 60" WYE	6" x 90" ELBOW
1-F	FWY STA. 181+00	CALCUTTA AVE. STA. 4+78	L	630	312	405	160	20	1
2-F	181+00	194+00	L	598	1108		85	30	3
3-F	181+00	194+00	R	590	712		10		
TOTAL THIS SH.					1818	2132	405	245	60

STORM SEWER									
I-2 LIN. FT. UNDER PAV'T									
STATION	FROM	TO	I-2 LIN. FT.		I-5 SPECIALS		I-5 SPECIALS		LOCATION OF STRUCTURE
			UNDER PAV'T	UNDER PAV'T	UNDER PAV'T	UNDER PAV'T	UNDER PAV'T	UNDER PAV'T	
1-5	181+00	184+57	L	360	226	6	173		
2-5	189+95	194+00	L						
3-5	183+30	183+33	L						
4-5	183+30	186+30	L						
5-5	183+30	189+59	L						
6-5	183+30	190+60	L						
7-5	183+30	193+60	L						
8-5	192+60		L						
TOTAL THIS SHEET									

SEE THE 1975 CUY-90-21.27  
PLANS FOR THE MEDIAN  
CONCRETE BARRIER INSTALL

- SEE THE 1975 CUY-90-21.27  
FOR SEWER AND DRAINAGE  
STRUCTURE UPGRADE.



FWY CURVE NO. 5  
E DATA  
D=0°28'00"  
Δ=5°39'15"R  
R=12277.58'  
T=606.29'  
L=1211.11'  
LC=1211.11'  
E=14.97'

CFN 1991165

CFN 1991227

SLM 24.88, 42"  
See Below

SLM 24.94, 27"  
See Below

SLM 24.97, 24"  
See Below

SLM 25.00, 21"  
Conduit blocked  
100' from outlet.  
Needs Additional  
cleanout.

SLM 25.13 = MM 180.94

L-10 SQ. YDS.				
ITEM NO.	STATION	SIDE	LENGTH	SODDING
FROM	TO		WIDTH	
1-B	194+00	204+00	L 16'x15"	184
2-B	194+00	205+45	R 16'x15"	200
TOTAL THIS SHEET				384

GUARD RAIL				
ITEM NO.	STATION		SIDE	TYPE (DEEP)
	FROM	TO		
1-G	194+00	203+88.4	E	STANDARD DNG. 2A BARRIER DESIGN
2-G	198+77		129'-L	STANDARD DNG. 2A BARRIER DESIGN
TOTALS				988.40

SEWERS				
ITEM NO.	STATION		SIDE	TYPE (DEEP)
	FROM	TO		
5-S	199+03	203+52	L/R	8" CL.B. SANI. CONC. ENCASED
6-S	202+08	203+58	L/R	8" CL.B. SANI. CONC. ENCASED
7-S	202+41	204+27	L/R	8" CL.B. SANI. CONC. ENCASED
TOTALS				172 298 386 394 366 394

Note:  
The Cost of Concrete Encasement shall Be Included In The Price Bid Per Linear Foot of The Pertinent Pipe Item. See Note in Proposal.  
A MINIMUM of 6" Encasement From The Outside of The Pipe Is Required.

6" UNDERDRAINS				
ITEM NO.	STATION		SIDE	TYPE (DEEP)
	FROM	TO		
1-F	194+00	204+00	L	6" UD SHALLOW
2-F	194+00	204+00	L/R	6" UD DEEP
3-F	194+00	204+00	R	6" UD SHALLOW
TOTAL THIS SHEET				3078 90 2 3

I-8 MONUMENT ASSEMBLY				
ITEM NO.	STATION	SIDE	TYPE	EACH
1-M	197+58.01	E	1	1
TOTAL				1

LOCATION OF STRUCTURE				
ITEM NO.	STATION		SIDE	TYPE
	FROM	TO		
1-S	194+00	197+11	L/R	1
2-S	197+11	201+17	L/R	1
3-S	201+17	204+00	L/R	1
4-S	198+94	199+27	L/R	1
TOTALS				16 24 22 23 24 26 26 162 145 107 194 193 107 113